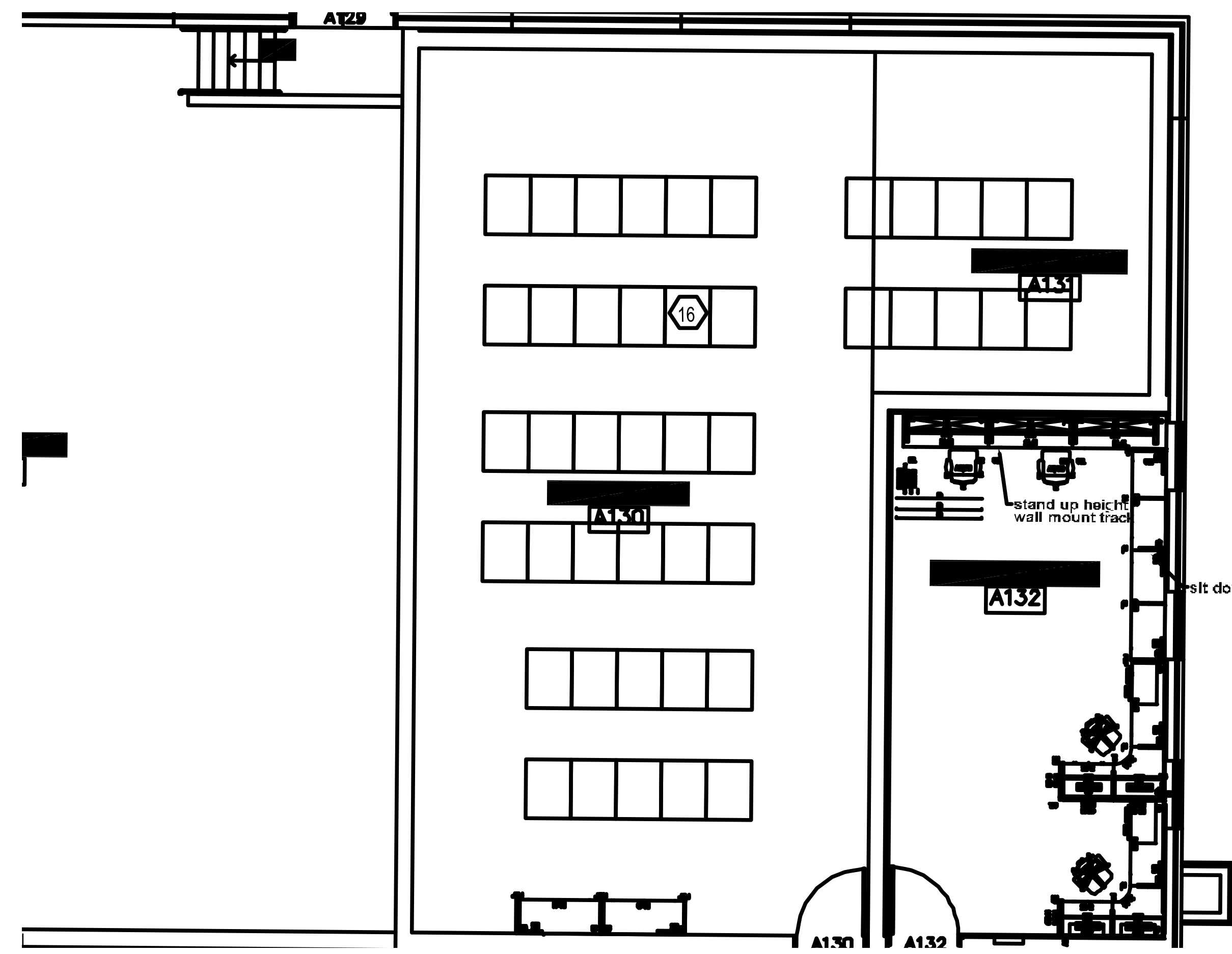
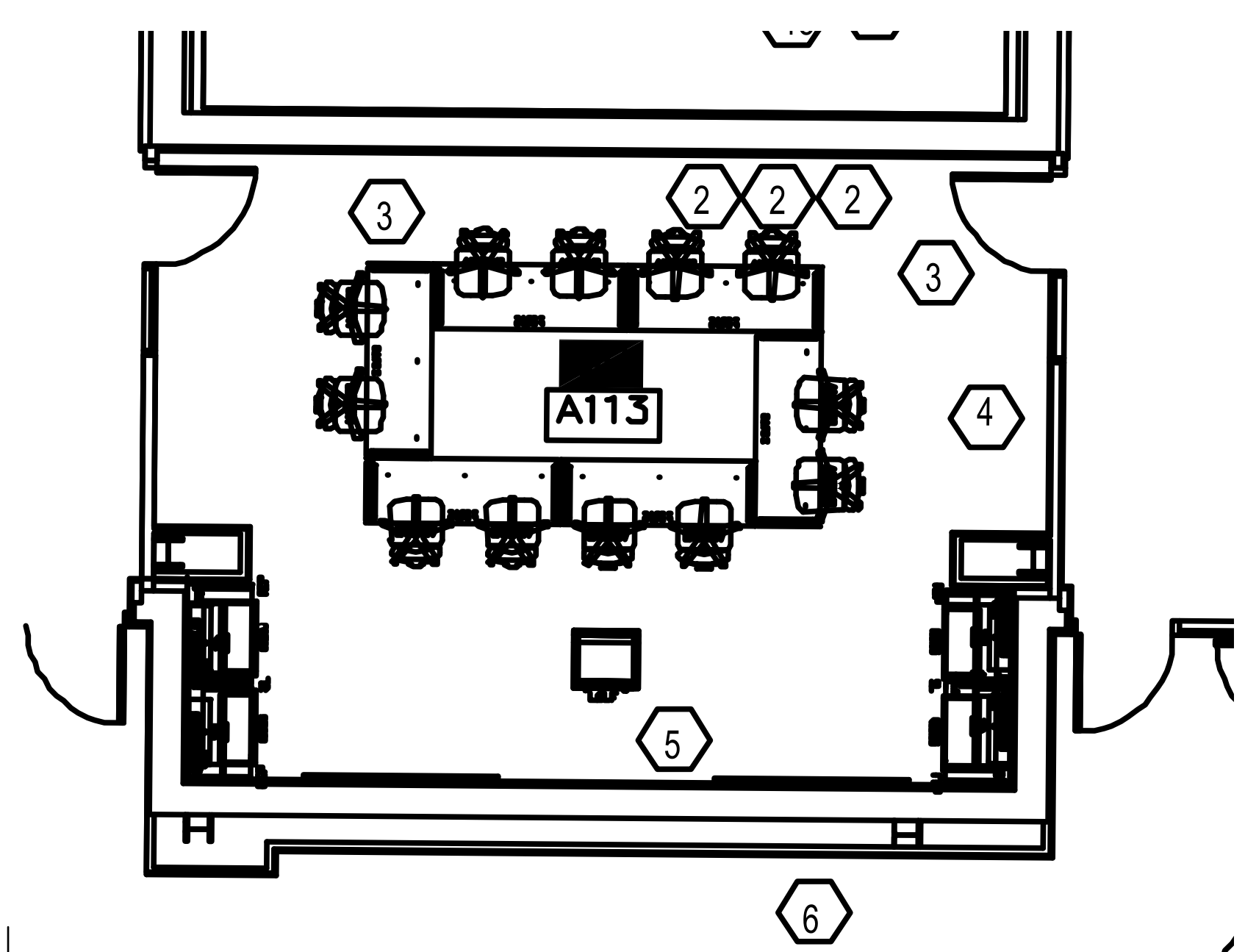


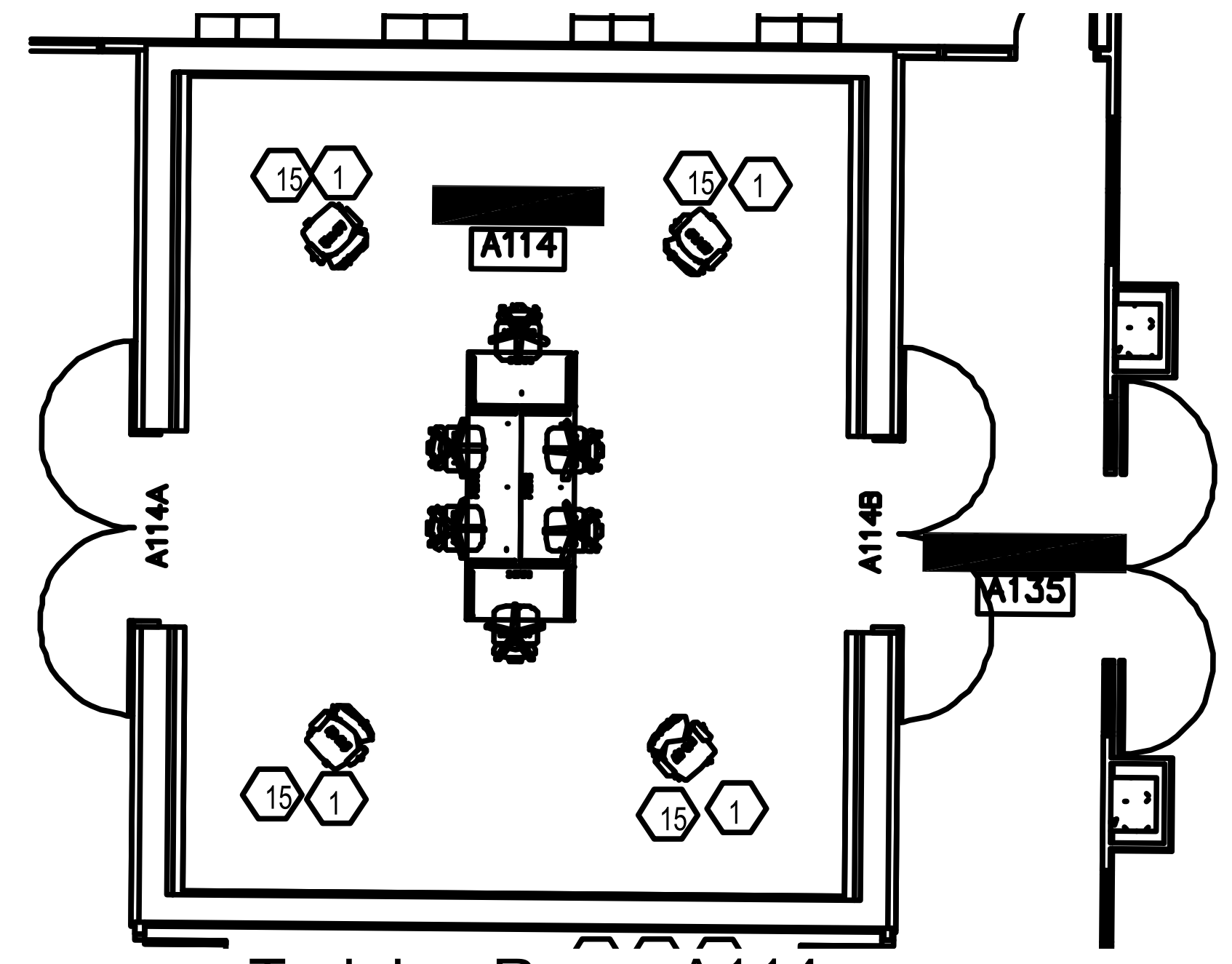
EOC A109



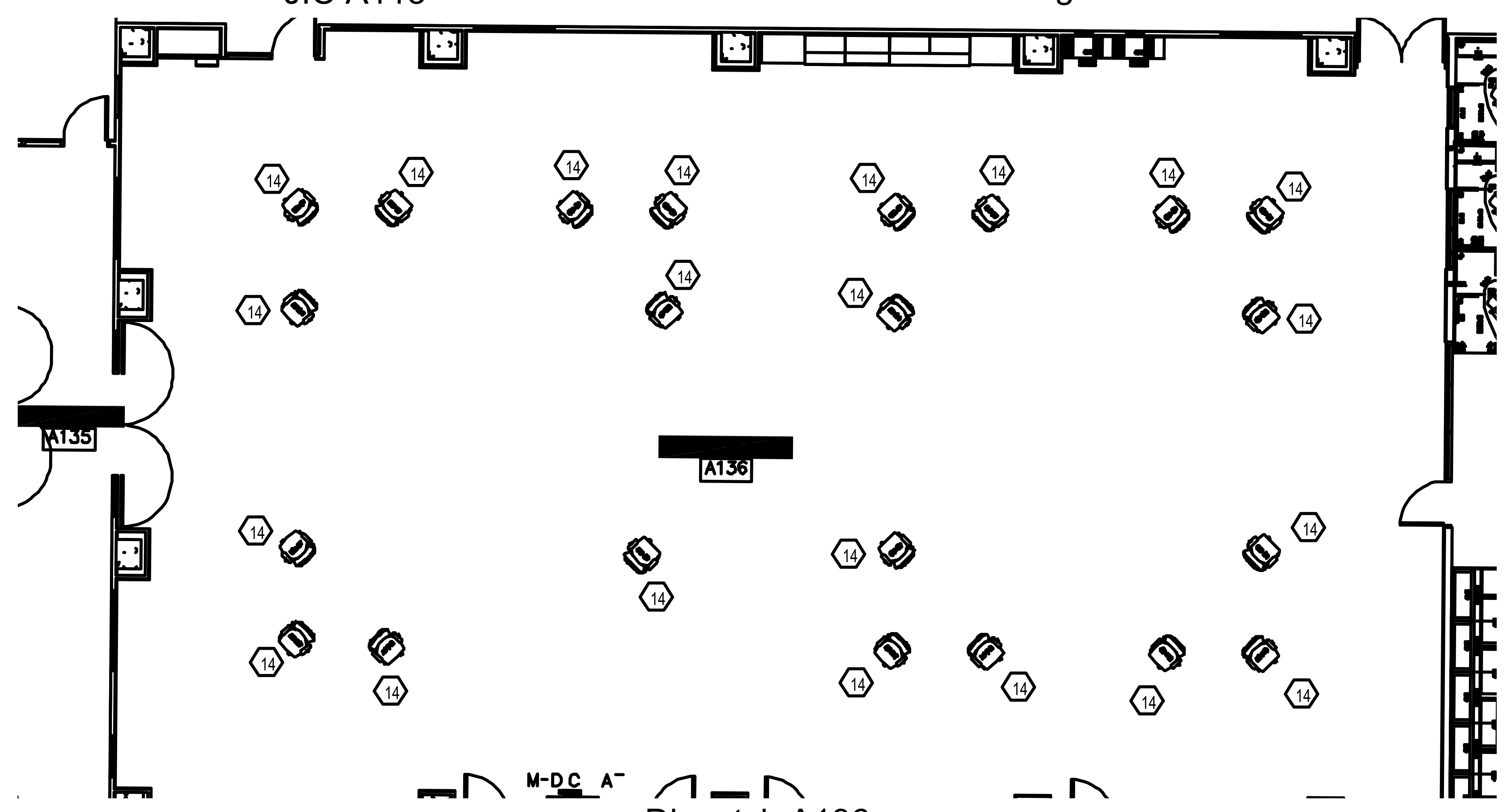
Server Room A130



JIC A113



Training Room A114



Dispatch A136

○ Numbered Notes

1. DM-TX-201-C transmitters installed in Training Center consoles fed to switcher in server room (Cable provided by Low Voltage Contractor)
2. 52" LCD Televisions mounted on North Wall of JIC (Joint Information Center) Cable Provided by Low Voltage Contractor
3. DigitalMedia Wall Plate for Lectern connectivity North Wall (D connection to be used only) Cable provided by Low Voltage Contractor
4. Wall Mounted TPS-4000 (Cable and Mount provided by Low Voltage Contractor)
5. Wall Mounted PTZ Camera at J-box. Install Extron SDI Distribution Amplifier to bottom of camera mount (Cable Provided by Low Votager Contractor)
6. Media Facility Panel (CFP1) Mounted at 20" AFF) Cable Provided by AV Contractor
7. Wall Mounted TPS-4000 - Mounted North side of South East Wing Wall (Cable and Mount provided by Low Voltage Contractor)
8. DM-TX-201-C transmitter installed under WEB EOC Cubby (Cable provided by Low Voltage Contractor)
9. DM-TX-201-C transmitter installed under GIS Cubby (Cable provided by Low Voltage Contractor)
10. Mitsubishi FD630 Projector ceiling mounted on East soffit structure DM-RMC-100-C will be mounted in conjunction with Projector (Cable provided by Low Voltage Contractor)
11. DM-TX-201-C transmitter mounted under table - to be used for both table presentation and Lectern Connectivity - AV contractor to supply interconnect cables for both applications (Cable provided by Low Voltage Contractor)
12. C2N-DB6 Keypad mounted in open Single Gang J-Box in North East Corner of EOC (Cable Provided by Low Voltage Contractor)
13. 60" LCD Televisions mounted on East Wall of EOC in Quad Layout (See Diagram AV1.03) Cable Provided by Low Voltage Contractor
14. Dispatch Consoles - Typical of 19 - AV contractor to install switcher in provided rack space, DVI DA's are to be under desk mounted and MCP-M10 are to be installed in accordance with Owners approval
15. Training Room Consoles - Typical of 4 - AV contractor to install DVI Switcher in provided rack space, DVI DA's are to be under desk mounted, DM-TX-201-C transmitters are to be mounted behind displays and MPC-M10's are to be installed in accordance with Owners approval (DM Cable Provided by Low Voltage Contractor)
16. AV Rack Location - Rack enclosure and power distribution are provided by owner. AV Contractor is to provided all necessary mounting hardware for AV equipment - to include blank panels



DRAWING NUMBER/DOCUMENT ID	
DESIGNED / DRAWN	Nathan Reasner
VERIFIED	
DIRECTOR	

Scott County, Iowa	
600 West Fourth Street	Davenport, IA 52801
Telephone (563) 328-8228	Fax (563) 328-3245

FILE NUMBER	
APPROVED	APPROVED

TITLE:
Equipment Locations

DRAWING NUMBER	AMENDMENT
AV1.03	A 1

SCALE MICROPLUTE